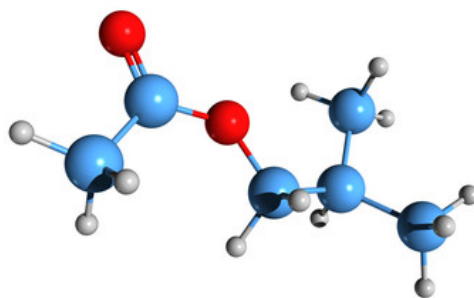


# Stéréo chimie

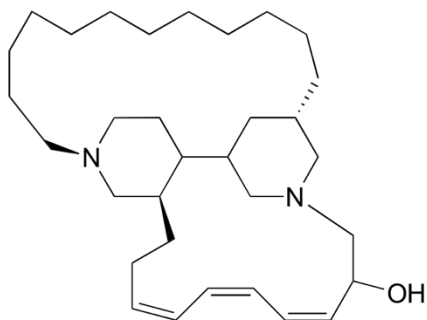


D/L

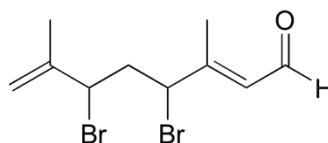
## Corrigé de l'exercice 11

### Exercice 11 : configuration *Z* ou *E*?

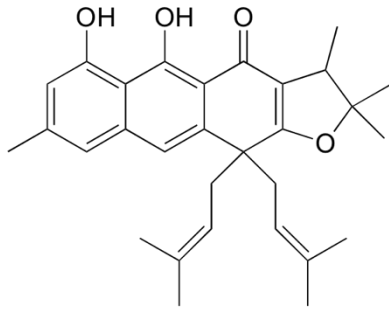
Préciser la configuration *Z* ou *E* des deux molécules ci-dessous :



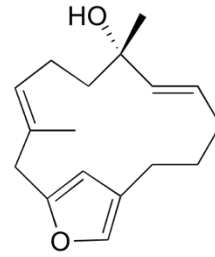
from marine sponge  
*J. Nat. Prod.* **2007**, 70, 538



from alga  
*J. Nat. Prod.* **2007**, 70, 596



from Nketto plant in Cameroon  
*J. Nat. Prod.* **2007**, 70, 600



from tree bark in Thailand  
*J. Nat. Prod.* **2007**, 70, 659

## solution

« N » est utilisé ici pour indiquer « Ni Z ni E »

